

Long Term Investment Fund (SIA) - Classic-EUR Class

ISIN (LU0244071956) Marketing material

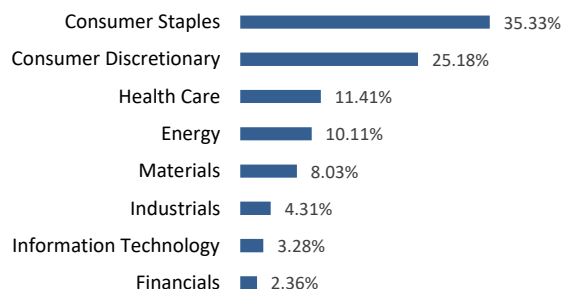
INVESTMENT OBJECTIVE

Longterm capital appreciation by investing in undervalued companies with strong fundamentals. "Buy and hold" applied to solid companies, with good profitability and that can be bought at a low price. Very little trading (average holding period is above 2 years), concentration (around 35 main positions), global scope.

INVESTMENT POLICY

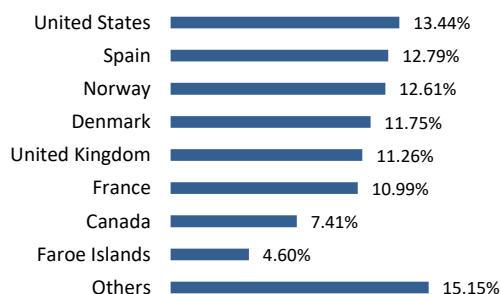
"Buy and hold" is applied to a limited, yet diversified, selection of securities considered by the Investment Manager as offering the greatest potential for profitability. The recommended holding period is at least five (5) years. Investment risk is spread; hence there apply no restrictions as to specific currency, sector or regional weights. The fund is normally fully invested. The Sub-Fund is actively managed. The index MSCI AC World AC Total Return Net EUR is used for the calculation of the performance fee (payable to the Investment Manager).

SECTOR BREAKDOWN (as at 31/12/2025)



Source: FPS. The above breakdown information is expected to fluctuate over time.

GEOGRAPHICAL BREAKDOWN (as at 31/12/2025)



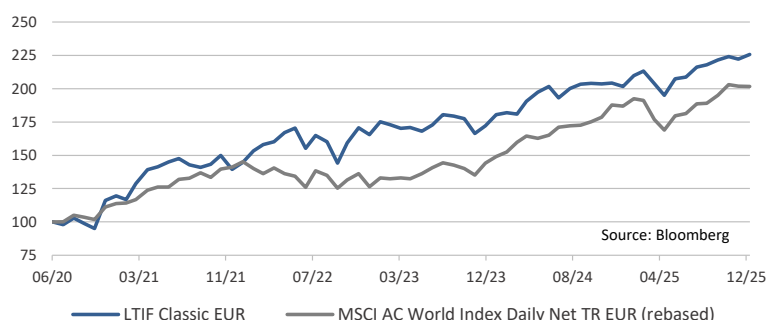
Source: FPS. The above breakdown information is expected to fluctuate over time.

RISK LEVEL



Complete information on the risks can be found on the KID on our website: www.s-i-a.ch

INDEXED PERFORMANCE*



NET PERFORMANCE

Period	Fund
Year-to-date	11.9%
1 month rolling	1.6%
3 months rolling	1.8%
1 year rolling	11.9%
3 years rolling	36.3%
5 years rolling	88.9%
Annualized return	8.9%
Since inception	7.7x

FUND'S HISTORY

Year	NAV	%	Year	NAV	%
2002	93.10	-6.9%	2014	321.19	11.6%
2003	134.30	44.3%	2015	331.39	3.2%
2004	171.84	28.0%	2016	397.47	19.9%
2005	245.44	42.8%	2017	408.84	2.9%
2006	313.21	27.6%	2018	348.20	-14.8%
2007	413.07	31.9%	2019	434.21	24.7%
2008	134.86	-67.4%	2020	407.89	-6.1%
2009	227.72	68.9%	2021	494.26	21.2%
2010	264.21	16.0%	2022	565.25	14.4%
2011	212.11	-19.7%	2023	616.42	9.1%
2012	248.37	17.1%	2024	688.53	11.7%
2013	287.75	15.9%	2025	770.32	11.9%

Past performance is net of fees and commissions. Past performance should not be taken as an indication or guarantee of future performance. Investors might lose invested capital. Future performance is subject to taxation which depends on the personal situation of each investor and which may change in the future.

* The share class Long Term Investment Fund (SIA)-Classic-EUR Class was created on 10/02/2006.

Past performance and the displayed results prior to this date relate to its direct precursor incorporated in the British Virgin Islands (ISIN VGG5634P1009), which does no longer exist.

TECHNICAL INFORMATION (as at 31/12/2025)

NAV	EUR 770.32	Dividend	Reinvested
AuM (in mio.)	EUR 163.06	Number of positions	33
Active Share *	97.70%	Tracking Error *	9.50%

* Source: figures calculated from Bloomberg

Long Term Investment Fund (SIA) - Classic-EUR Class

ISIN (LU0244071956)

10 LARGEST HOLDINGS (as at 31/12/2025)

Grifols SA	8.12%
ISS A/S	8.06%
Reckitt Benckiser Group PLC	4.76%
Viscofan SA	4.67%
Bakkafrøst P/F	4.60%
Leroy Seafood Group ASA	4.57%
Nexans SA	3.87%
Henkel AG & Co KGaA	3.82%
Pluxee NV	3.77%
Pandora A/S	3.69%

Source: FPS. The above breakdown information is expected to fluctuate over time.

GENERAL INFORMATION

Fund manager	SIA Funds AG
Custodian bank	Bank Pictet & Cie (Europe) AG, Succursale de Luxembourg
Legal status	UCITS V Luxembourg Sicav
Country of registration	LU, CH, AT, DE, ES, FR, GB, IT, NL
Inception Date	10 February 2006
Close of fiscal year	31 December
Multiclass	CHF, EUR, EUR D, EUR B, USD
NAV valuation	Daily, "forward pricing"
Management fee	1.50% p.a.
Performance fee	15% over High Watermark and Hurdle (MSCI AC World Net Return)
Min. initial subscription	No minimum
Telekurs	002432569
ISIN	LU0244071956
Bloomberg	LTIFCLA LX Equity
Lipper	65063043
WKN	A0JD7E
Website for documents	www.fundinfo.com & www.fundsquare.net

* The figures shown do not include all the costs of the product itself. For further information on the costs, please refer to the prospectus and other fund documents.

Centralising agent in France: BNP Paribas Securities Services Paris, 9 rue du Débarcadère, 93500 Pantin / Correspondent bank in Italy: BNP Paribas Securities Services Milan, Via Ansperto, 5 - 20123 Milano / Paying and Information Agent in Austria: Raiffeisen Bank International AG, am Stadtpark 9, A-1030 Vienna / Paying and Information Agent in Germany: B. Metzler seel. Sohn & Co. KGaA Grosse Gallusstrasse 18, 60311 Frankfurt am Main / Swiss representation agent: FundPartner Solutions Suisse S.A., Route des Acacias 60, CH -1211 Geneva 73 / Swiss paying agent: Banque Pictet & Cie SA, Route des Acacias 60, CH -1211 Geneva 73 / Facilities agent in United Kingdom: Pictet Asset Management Limited, Level 11, Moor House, 120 London Wall, London EC2Y 5ET.

Past performance must not be considered as an indicator or guarantee of future performance, and the addressees of this document are fully responsible for any investments they make. No express or implied warranty is given as to future performance.

It is neither directed to, nor intended for distribution or use by, any person or entity who is a citizen or resident or located in any locality, state, country or jurisdiction where such distribution, publication, availability or use would be contrary to law or regulation. The latest versions of the KID, prospectus, articles of association, annual and semi-annual reports should be consulted prior to any investment decision. These documents are available in English and German free of charge on www.fundsquare.net, at FundPartner Solutions (Europe) S.A., 15 Avenue J.F. Kennedy, L-1855 Luxembourg or at the local entity mentioned above. The information and data presented in this marketing communication are not to be considered as an offer or solicitation to buy, sell or subscribe to any securities or financial instruments. Information, opinions and estimates contained in this document reflect a judgment at the original date of publication and are subject to change without notice. It has not taken any steps to ensure that the securities referred in this marketing communication are suitable for any particular investor and this marketing communication is not to be relied upon in substitution for the exercise of independent judgment. Tax treatment depends on the individual circumstances of each investor and may be subject to change in the future. Before making any investment decision, investors are recommended to ascertain if this investment is suitable for them in light of their financial knowledge and experience, investment goals and financial situation, or to obtain specific advice from an industry professional. The value and income of the securities or financial instruments mentioned in this document are based on rates from the customary sources of financial information and may fluctuate. The market value may vary on the basis of economic, financial or political changes, the remaining term, market conditions, the volatility and solvency of the issuer or the benchmark issuer. Moreover, exchange rates may have a positive or negative effect on the value, the price or the income of the securities or the related investments mentioned in this document. You can obtain a summary of investor rights to the following link: <https://www.pictet.com/content/dam/www/documents/legal-and-notes/fundpartner-solutions/fps-summary-of-Investors-rights.pdf>